

COMMERCIAL STRETCH

Fluid-Applied Membrane Waterproofing

PRODUCT NAME

Commercial Stretch

MANUFACTURER

Polyguard Products, Inc.

Ennis, TX 75119

(214) 515-5000

www.polyguardproducts.com

PRODUCT DESCRIPTION

BASIC USES

Commercial Stretch is designed for waterproofing concrete, precast concrete, CMU foundation walls, and other structural surfaces on the hydro positive-side. When redundant protection is desired, a hydro positive-side application of Commercial Stretch coupled with a hydro negative-side application of PRO 1000 is suggested.

PRODUCT FEATURES

- Factory-controlled, single component product ensures consistency.
- The waterproofing membrane can be left exposed to the sun (UV) with no effects to the warranty for thirty (30) days maximum.
- Mold will not find a food source in the Commercial Stretch membrane, which thereby contributes to the overall mold management within a wall system.
- When a repair or stop point is established, wet product can later be applied to clean and cured product creating a continuous system without seams.
- Minimal set-up and close-down procedures for spray applications adds productive time for spraying, quick adjustments in job sequencing, and where jobsite movement is required.
- Application in ambient temperatures between -20°F (-29°C) and 120°F (49°C) reduces project rescheduling due to weather related conditions.
- After application, it is not affected by immediate or subsequent exposure to rain.

COMPOSITION & MATERIALS

Commercial Stretch is a patented, single component, cold liquid-applied, elastomeric, thermoplastic rubber coating & mastic that cures to form a durable waterproofing membrane capable of bridging substrate shrinkage cracks up to 1/16-inch.

Commercial Stretch contains solvent-based liquid thermoplastic materials. It can be ordered with VOC contents of 525, 400, 200 or 100 g/l to meet more restrictive local requirements.

Product Data Sheet

Per regulations of all states, excluding California

Proban®, a contact mold-inhibiting product, can be added at the factory for additional mold protection.

TECHNICAL DATA

See properties table below.

INSTALLATION

GENERAL SURFACE PREPARATION

- Scrape and brush dirt and debris from surfaces.
- Smooth and fill flush: rough concrete, surface defects and voids greater than 1/2-inch in depth.
- For maximum results, substrates receiving Commercial Stretch should have minimum pull-off strengths of 175 PSI when cured.
- Prepare substrates to be clean and dry; free of mortar smears and form release agents; and free of frost/ice.

Poured Concrete Wall Preparation:

Before coating, allow 24 hours for drying and start said time measurement after bleed water has drained from the wall (longer dry time will be needed for lower than 50°F/10°C ambient temperatures). Remove form ties from the inside and outside faces of the wall, and fill each tie depression flush with Detail Sealant PW or non-shrinking Portland cement grout. Allow Detail Sealant PW a minimum 1 hour to dry. Fill honeycombed concrete with non-shrinking Portland cement grout and allow said application to cure before coating.

Concrete Masonry Wall Preparation:

Leave CMU walls un-parged. Strike mortar joints full and flush to the face of the CMU. Grout or fill mortar voids with mortar, non-shrinking Portland cement grout, or Detail Sealant PW. Allow mortars and grouts 12 - 48 hours to dry before coating. Mortar or grout-filled cores, bond beams, and rain-soaked uncovered walls hold substantially more water and will require added time to dry before coating. When in doubt about the acceptable dryness of a wall, apply a 60 mil coating onto a 2' x 2' wall area and allow the coating to dry. Proceed with coating the wall if the dry sample coating sticks to the wall surface. Allow more drying time if the dry sample coating doesn't stick to the wall. Repeat as necessary.

Submit precast and control joint designs to Polyguard for approval and prior to commencing work.

PRIMING

No primer is needed. For best results, apply Commercial Stretch directly to sound concrete or CMU.

MEMBRANE APPLICATION

- Apply Commercial Stretch to surfaces that are clean, dry, and free of mortar smears, form release agents, and frost/ice.
- Apply between ambient temperatures of -20°F (-29°C) and 120°F (49°C).
- Apply Commercial Stretch in one coat or more.
- Spray, roll, or brush the coating to achieve a continuous film at the desired coverage rate of 27 square feet per gallon (60 wet mils/30 dry mils).
- Use an airless sprayer with 3700 to 4000 PSI stall pressure and using a 0.037-inch reversible tip.
- Coverage rates will vary inversely related to substrate texture and porosity.
- Apply Detail Sealant PW either before or after the application of Commercial Stretch. Allow Detail Sealant PW a minimum of 1 hour to dry before over-coating with Commercial Stretch.
- Allow Commercial Stretch a minimum of 24 hours to cure before over-coating with Detail Sealant PW.

Drying in direct sunlight and temperatures above 65°F (18°C) can cause blistering of the coating. Where said exposure can't be avoided, apply in multiple coats of 20 to 30 wet mils allowing each application to dry a minimum 24 hours before applying the next coating.

INSPECTION

The coating is considered dry when the face of the coating will not deform under heavily-applied thumb pressure. Coverage is considered complete when the dry coating has been inspected and found to be uniform and continuous.

BACKFILL

Backfill after the system is complete in a non-destructive manner. Shape the final grade to drain surface water away from the structure.

PROTECTION AND DRAINAGE

The system is considered complete when Lowflow™, Polyflow® 10, or Polyflow® 15 have been adhered to the face of the coating with Quick Grip Spray Adhesive; and associated drainage fittings are connected to daylight or to an active sump system.

Commercial Stretch will be adversely affected by prolonged or constant ultraviolet radiation (UV) exposure longer than 30 days. For periods of (UV) exposure greater than 30 days, cover with PRO 1000 prior to the end of the

30-day term or remove and recoat uncovered/exposed Commercial Stretch after the 30-day term.

MEMBRANE REPAIR

Repair damaged membrane and/or thin coverage with additional material. Thoroughly clean and dry damaged areas or thin coverage before re-coating with Commercial Stretch. Allow re-coated areas a minimum of 24 hours to cure before installing protection/drainage materials.

STORAGE

Protect containers and packages from water, sparks, flames, excessive heat, poor ventilation and to meet requirements of local governing authorities.

Store Commercial Stretch out of direct sunlight and in ambient temperatures between -10°F (-23.3°C) and 100°F (37.7°C). For best application results, store Commercial Stretch in ambient temperatures above 40°F (4.4°C).

SAFETY

MSDS sheets for all Polyguard products can be obtained at our website www.polyguardproducts.com. Call Polyguard Products, Inc. at (214)515-5000 with questions.

WARRANTY

We, the manufacturer, warrant only that this product is free of defects, since many factors which affect the results obtained from this product are beyond our control; such as weather, workmanship, equipment utilized and prior condition of the substrate. We will replace at no charge product proved to be defective within twelve (12) months of purchase, provided it has been applied in accordance with our written directions for uses we recommended as suitable for this product. Proof of purchase must be provided. A five (5) year material or system warranty may be available upon request. Contact Polyguard Products, Inc. for further details.

TECHNICAL SERVICES

Technical assistance, information and Polyguard's products are available through a nationwide network of distributors and architectural representatives, or contact Polyguard Products, Inc.
P.O. Box 755, Ennis, TX 75120-0755
Sales: (615) 217-6061 • Tech Support: (214) 515-5000 • Fax: (615) 691-5500
Email: archtech@polyguardproducts.com
Website: www.polyguardproducts.com

PHYSICAL PROPERTIES TABLE		
PROPERTY	TEST METHOD	TYPICAL VALUE
COLOR		Available in Gray or Beige
PERMEANCE TO WATER VAPOR TRANSMISSION	ASTM E 96	0.058 Perms
MEMBRANE HYDROSTATIC PRESSURE RESISTANCE	ASTM D 5385	231 ft.
HYDROSTATIC PRESSURE OVER CRACKS, POURED CEMENT AND POURED MASONRY	ASTM C 1306	11 PSI
LOW-TEMPERATURE FLEXIBILITY AND CRACK BRIDGING	ASTM C 836 Section 6.7	Pass
REMAINS IN PLACE DURING APPLICATION, POURED CEMENT AND MASONRY	ASTM C 836 Section 6.9	Pass
ADHESION STRENGTH TO POURED CONCRETE	ASTM C 836 Section 6.10	7.551 lbf/in.
EXTENSIBILITY AFTER HEAT AGING	ASTM C 836 Section 6.12	No Cracking or tearing of membrane
RESISTANCE TO WATER	ASTM D 2939 Section 15	No Blistering or Re-emulsification
ANTIFUNGAL ACTIVITY MILDEW AND ROT RESISTANCE (Proban®)	AATCC METHOD 30	No visible growth on any film
COLD, LIQUID-APPLIED, BELOW-GRADE, EXTERIOR DAMPPROOFING AND WATERPROOFING MATERIALS	ICC-ES AC 29	Pass
CATEGORY 1 40 C.F.R.§59.401 "WATERPROOFING SEALERS AND TREATMENTS"		Available in 525; 400; 200; or 100 g/l VOC

PACKAGING	PART NUMBER	UNIT SIZE
COMMERCIAL STRETCH	PWSTRETCH GRAY 05	5 gallon pail
<i>Proban® mold inhibitor can be added at the factory.</i>	PWSTRETCH GRAY 55	55 gallon drum
Commercial Stretch Accessories:		
Detail Sealant PW™ 20 oz. sausage	DETAIL SEALANT PW – SAU 20 OZ	20 sausages/ctn
Detail Sealant PW™ 3 gal. pail	DETAIL SEALANT PW – 3 GAL	3 gallon pail
Lowflow™	LOWF	4' x 200' roll
Polyflow® 10	POLYFLOW10	4' x 50' roll
Polyflow® 10P	POLYFLOW10P	4' x 50' roll
Polyflow® 15	POLYFLOW15	4' x 50' roll
Polyflow® 15P	POLYFLOW15P	4' x 50' roll
Totalflow™	TOTAL FLOW	24" x 50' roll
Totalflow™ End Outlet (4")	OUTLET4-UNIV	N/A
Totalflow™ Tee Outlet (4")	TEE4-UNIV	N/A
Quick Grip Spray Adhesive	PWQGADH30	30# canister

P.O. Box 755
Ennis, TX 75120
PH: (214) 515-5000
FX: (972) 875-9425

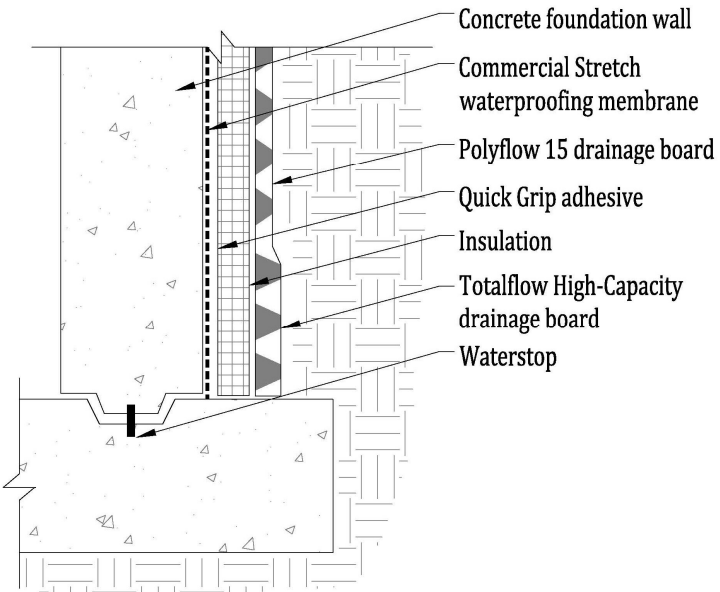
The information contained in this document is based on data and knowledge considered to be true and accurate at time of printing and is offered for the users' consideration, investigation and verification. Polyguard Products, Inc. cannot be held liable for errors made as a result of information herein. Changes and modifications can be made to this document without prior notice. No statement, recommendation or suggestion is intended for use which would infringe on patents or copyrights held by Polyguard Products, Inc.

www.PolyguardProducts.com

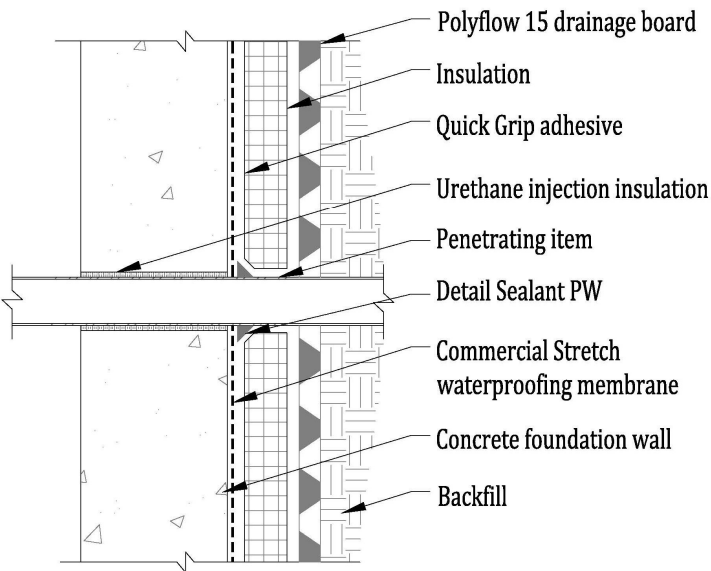


Common Polyguard® Commercial Stretch Membrane Applications

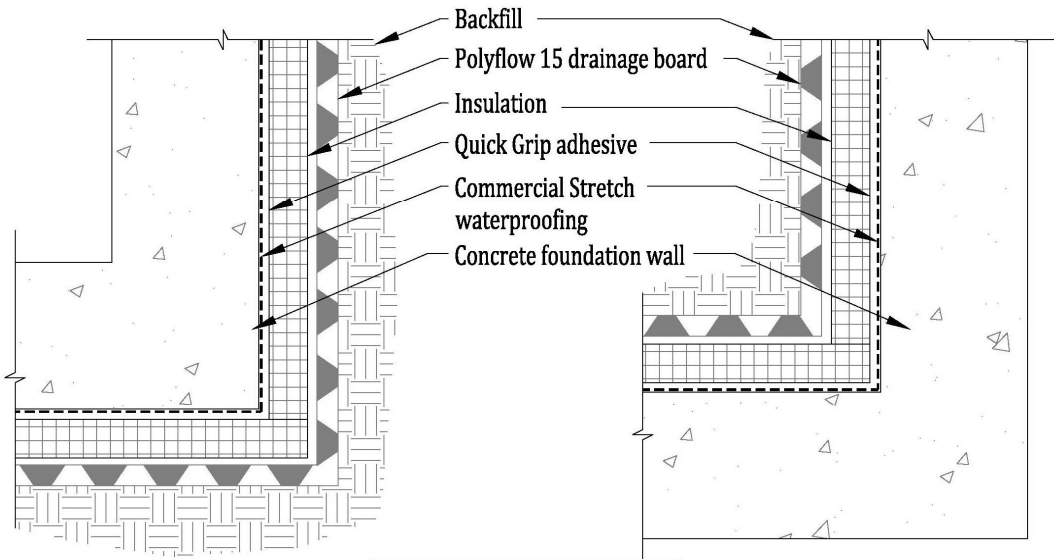
These diagrams are not intended to be application instructions, simply illustrations



Foundation Wall and Footer



Foundation Wall Penetration



Foundation Wall Corner Details

Please Note: Not intended to be full details. For full application detail on these configurations, see Polyguard details CS2, CS5, CS6, or contact Polyguard Products.